

2

Process and Model



Definition

A design is
a model or set of models
of a projected construction
produced by a deliberate process.

What is a Model?

Design Process

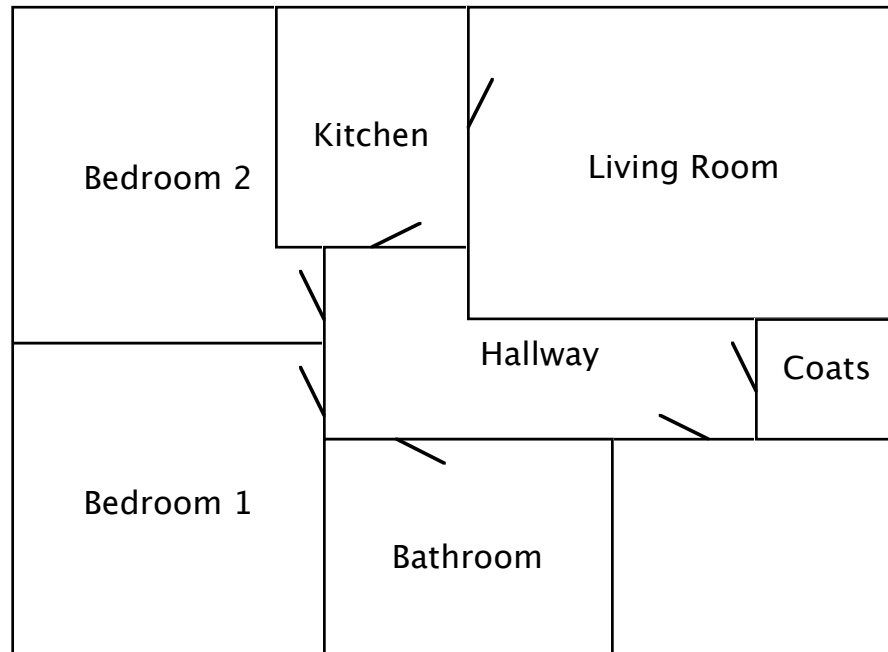
Development Process

Moving House

what is a
model?

design
process

development
process



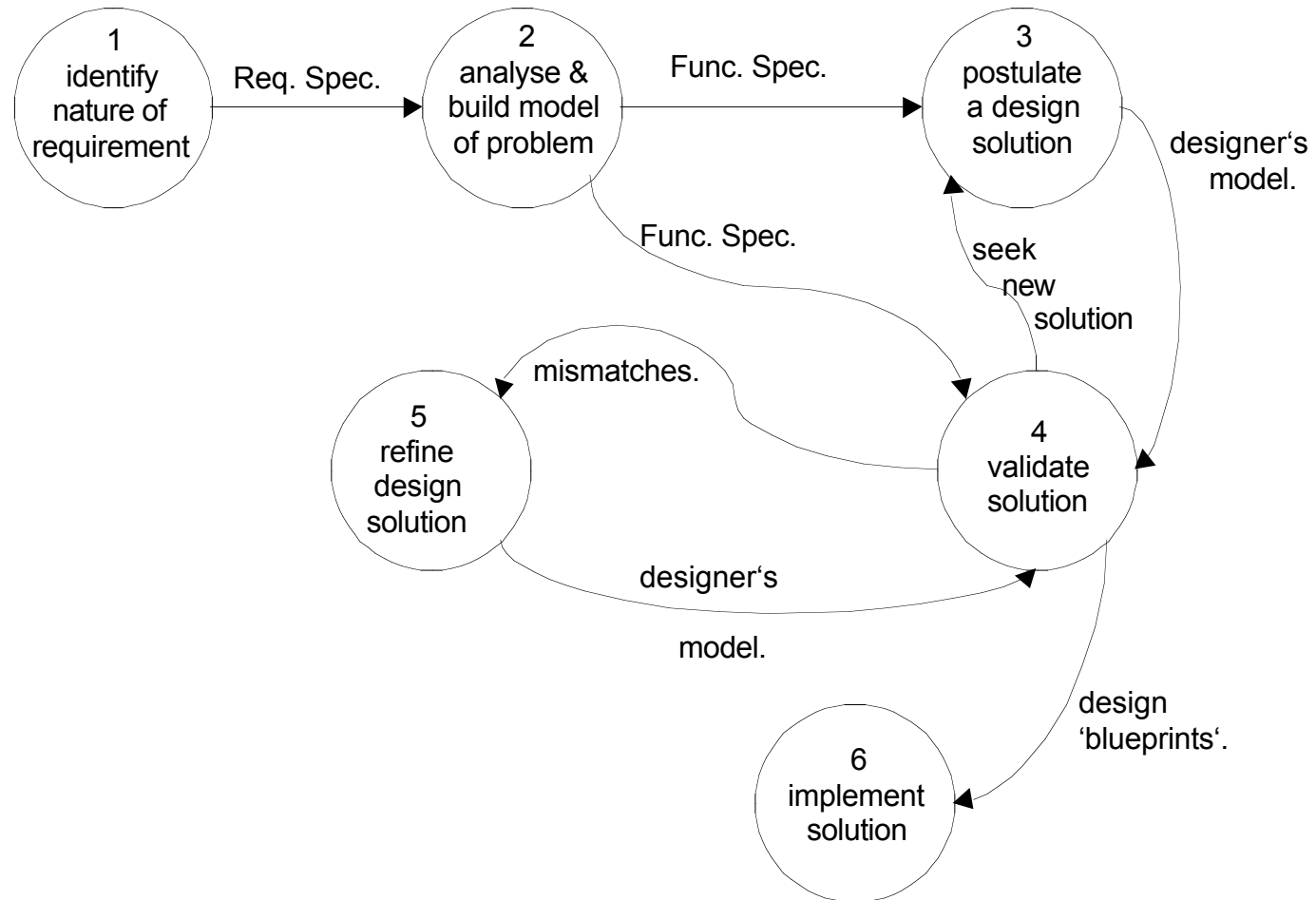
[after Budgen, p 9]

A General Design Process

what is a model?

design process

development process



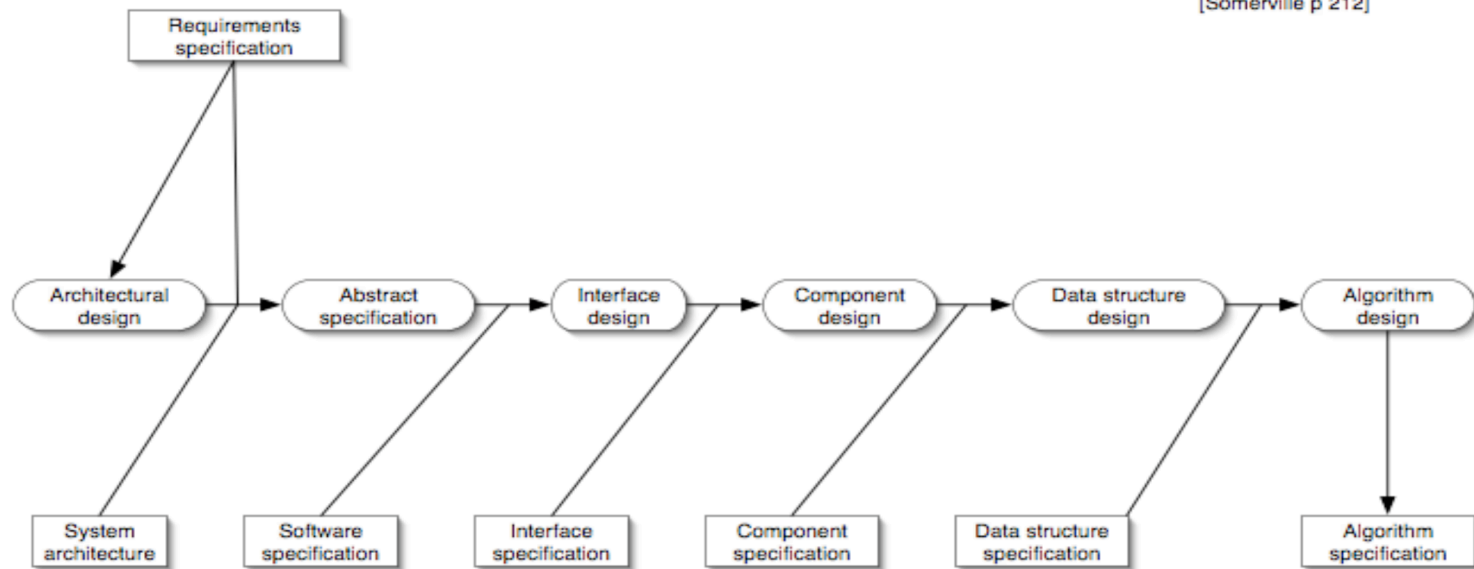
A Linear Design Process Showing Work Products

what is a model?

design process

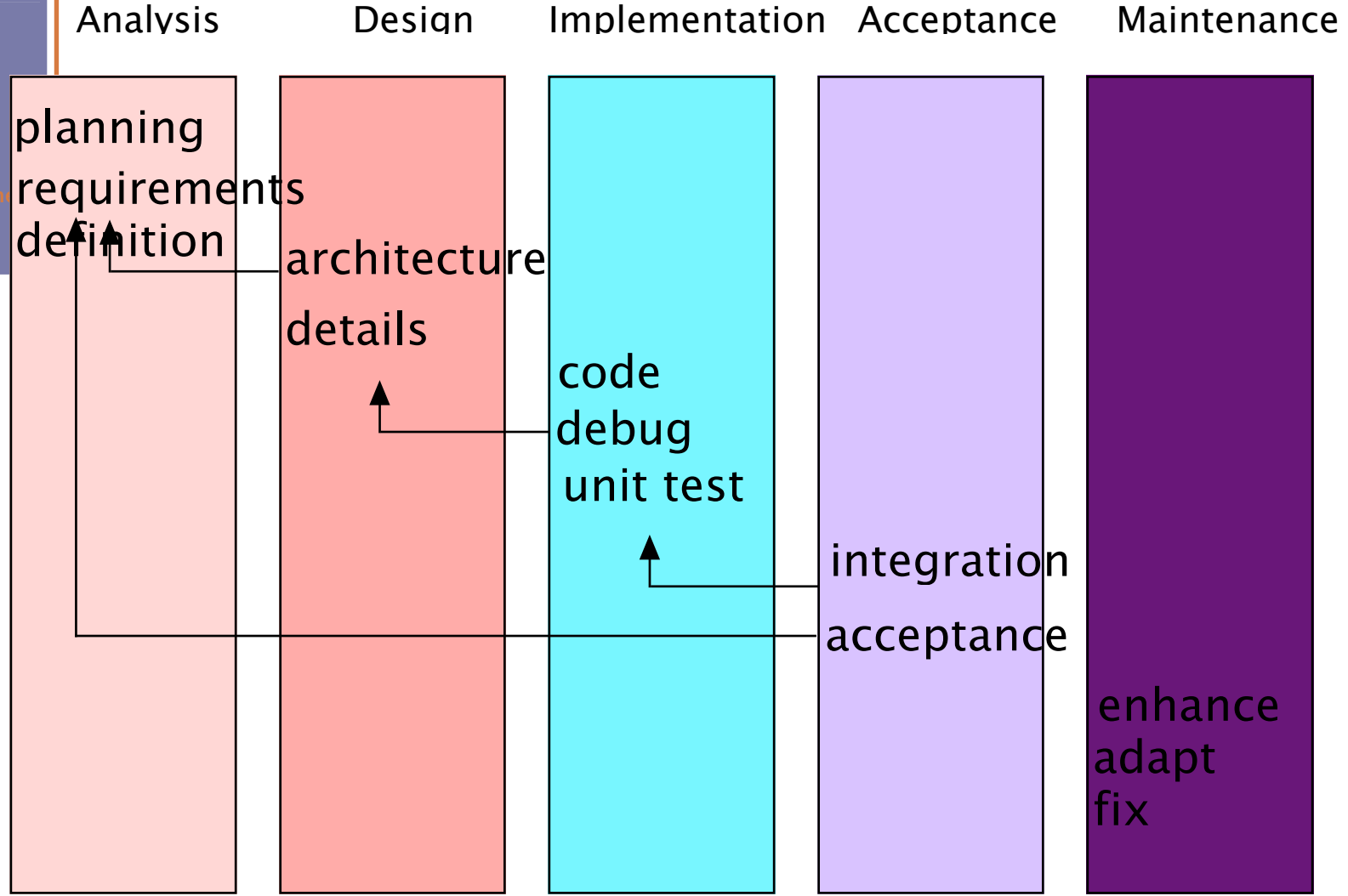
development process

[Somerville p 212]



The Waterfall Process of Software Development

what is a model?
design process
development process



Software Design and Architectures

after Fairley 1985, p 42

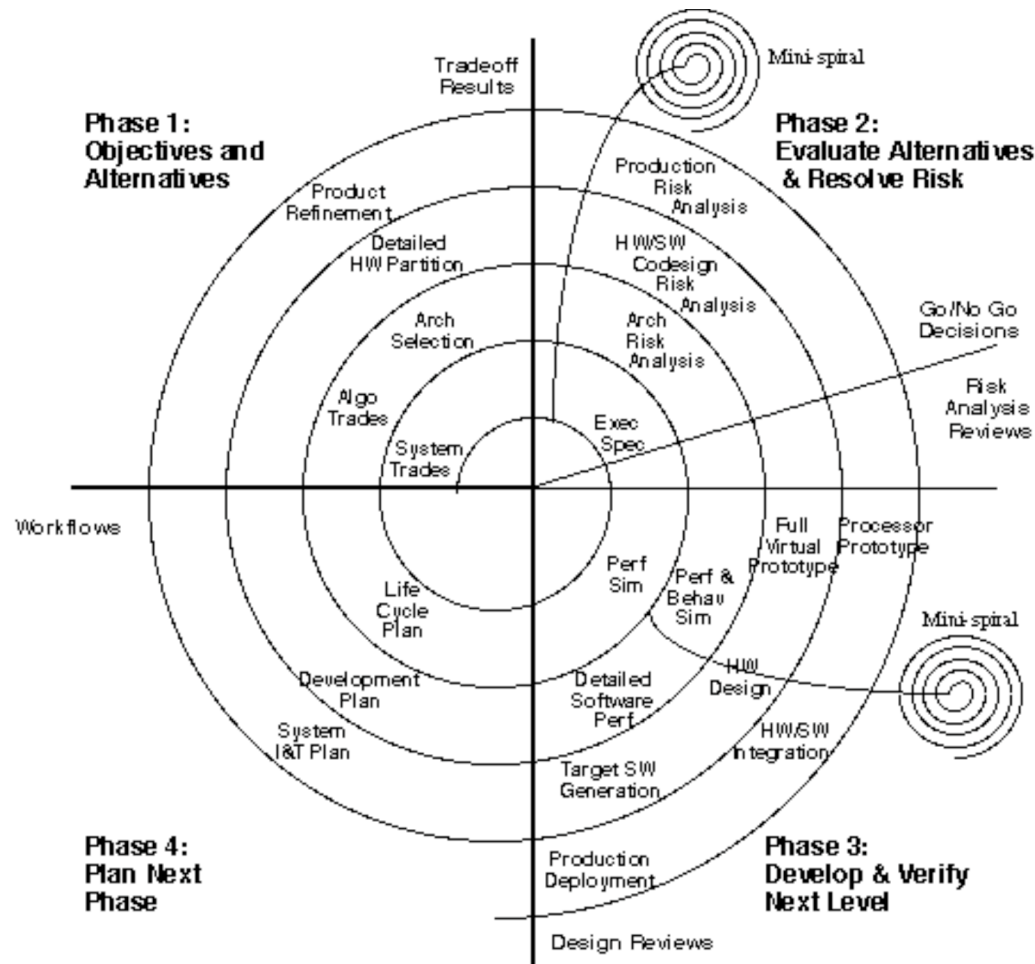
Process and Model

The Spiral Process of Software Development

what is a model?

design process

development process

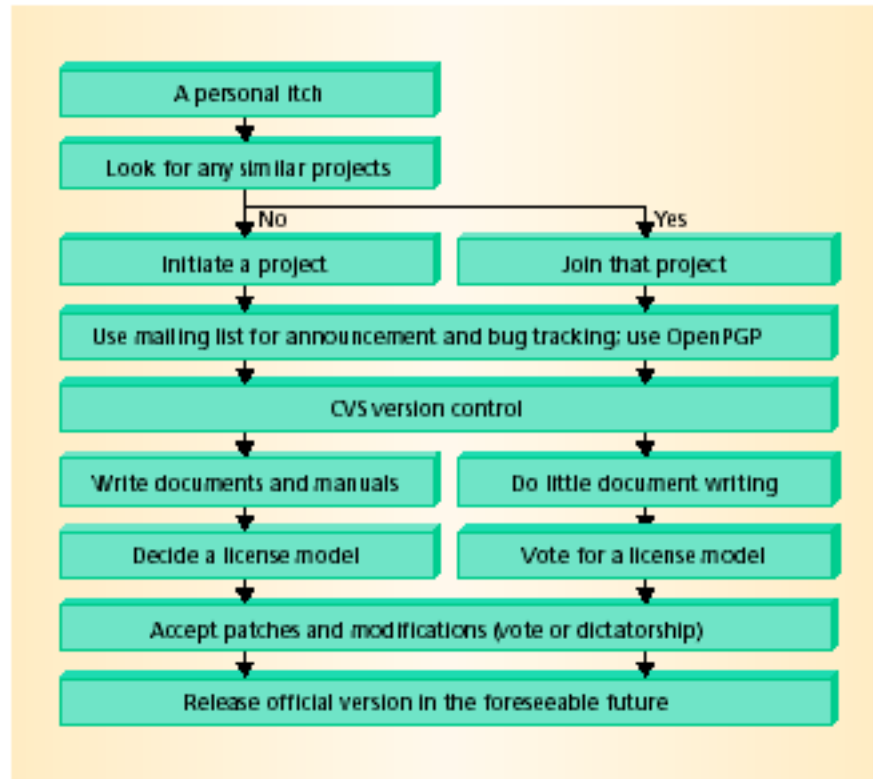


A General Open Source Process Model

what is a model?

design process

development process



after Wu & Lin 2001