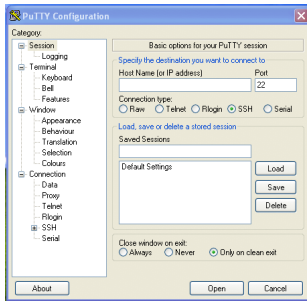


Installing and using PuTTY on Windows for CS 136 (W08)

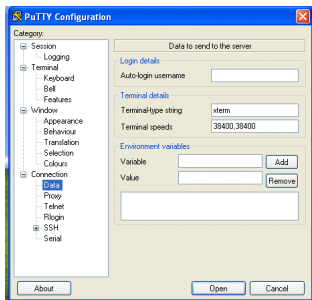
Installing PuTTY is just a matter of downloading the `putty.exe` file from the following url:

<http://www.chiark.greenend.org.uk/~sgtatham/putty/download.html>

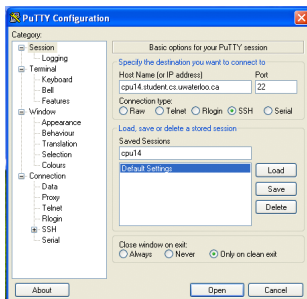
When you start PuTTY, it always displays a configuration window.



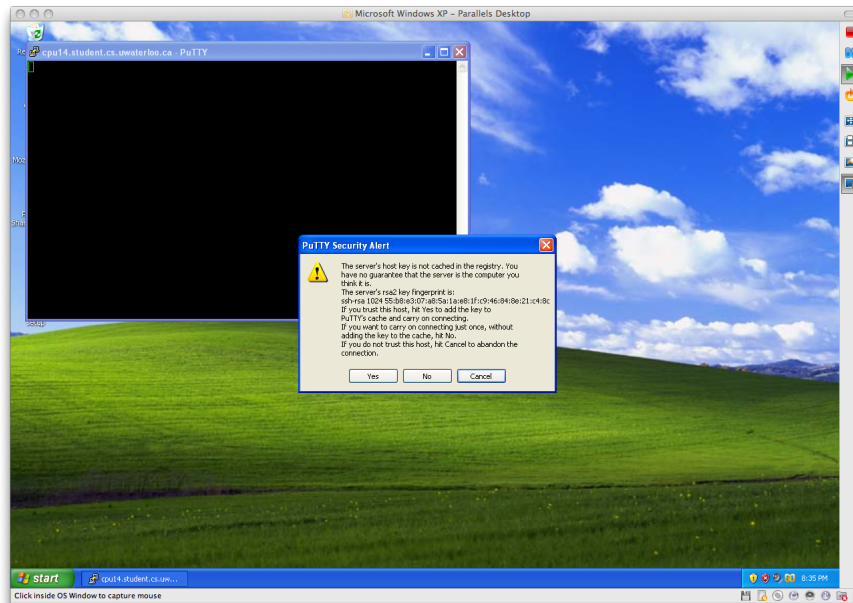
The first time you use it, click on Data under Connection. The default “terminal type string”, `xterm`, will cause you problems in connecting to the CS Undergraduate Environment (CSUE). Change this to `vt100`.



Then click on Session at the top to return to the first window, and enter the name of a CSUE server. You can save this information by giving it a name in the Saved Sessions window and clicking Save. (The name will be available and can be loaded next time you use PuTTY.)



When this is done, click on Open to start the connection. It will say “login as:” and you can type your UW userid. It will then ask for your password. The first time you connect to any particular server, you will get a warning like this:



Don't be alarmed by this. Just click Yes.

You will then get a window (the black one behind the warning in the last screen capture) in which you can type and execute commands on the remote server. To log off the remote server, type “exit”, or just close the window. If you want to change the font and colour scheme, you can do so in the configuration window before logging in, and you can save your chosen settings with a name for future use.